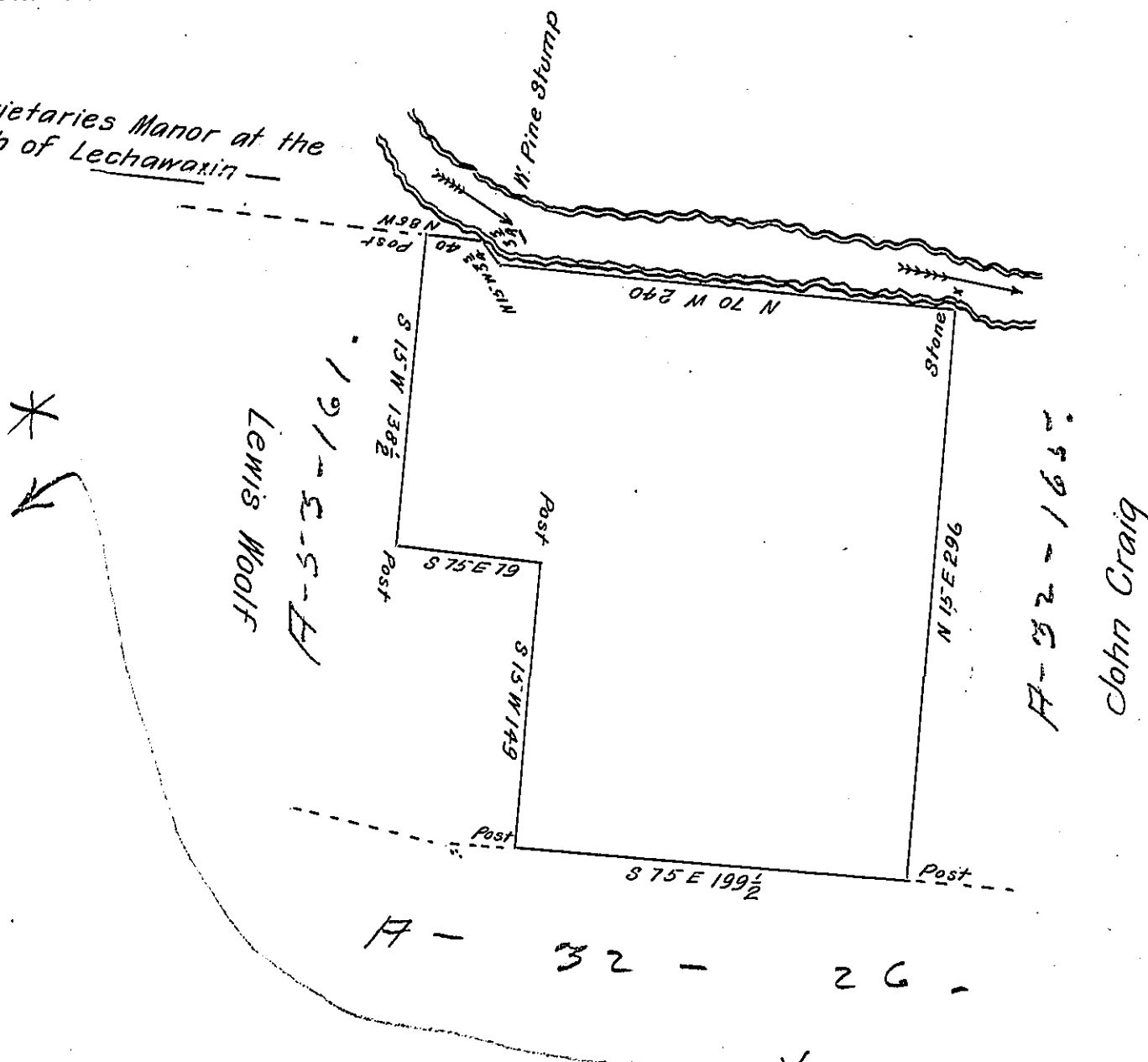


Proprietaries Manor at the Mouth of Lechawaxin

The Warrant appears to be dated the 9th July 1792 as the 2^d of the 1st no Warrant dated 2^d May 1792



By Virtue of a Warrant dated the 2^d May 1792 Surveyed the 26th

August 1794 to Thomas Martin the above described tract of land situate on Delaware River about half a mile below the mouth of Lackawaxin in the County of Northampton. Containing four hundred and eighteen acres ^{fifty} ~~eighty~~ _{five} perches and the allowance of six P Cent &c.

Geo Palmer D.S

To Daniel Brodhead Esquire
Surveyor General

IN TESTIMONY that the above is a copy of the original remaining on file in the Department of Internal Affairs of Pennsylvania, made conformably to an Act of Assembly approved the 16th day of February, 1833, I have hereunto set my Hand and caused the Seal of said Department to be affixed at Harrisburg, this first day of December 1905.

Geo. P. Palmer
Secretary of Internal Affairs.